



TestHuset.dk

Rapportering i QC

**HP test brugergruppe
Konference 2011**



Problem stilling

- **Problem**

- o "Jeg har brug for en rapport fra QC der viser mig hvor mange testcases jeg har i forhold til hvad jeg havde estimeret"

KPI i ALM

Application Lifecycle Management Domain: TESTCENTER, Project: HSN_HP_Konference_2011, User: hsn [Logout](#)

< Back Forward > Tools Help

- Dashboard
- Analysis View
- Dashboard View
- Management
- Releases
- Libraries
- Requirements
- Requirements
- Business Models
- Testing
- Defects

Releases Edit View

Releases

- Release 1.0

Details Release Scope Master Plan **Scorecard** Status Attachments

Generate Scorecard Layout KPI Analysis KPI Numerator KPI Denominator

Release 1.0 Scorecard

	Brugeraccepttest design				Brugeraccepttest	
	Authored Tests		Covered Requirements		Passed Requirements	
	Planned	Actual	Planned	Actual	Planned	Actual
Krav specifikation	450	0	100 %	50 %	10 %	

* Data updated to: 28-10-2011 12:03:00. KPIs are calculated at predefined hours on a daily basis. KPI calculations end when a milestone reaches its due date.



Excel rapport

• Krav navn	plan	faktisk
• Krav 1	10	7
o Krav 1.1	3	3
o Krav 1.2	4	2
o Krav 1.3	3	2



Custom felt

hp Application Lifecycle Management Domain: TESTCENTER, Project: HSN_HP_Konference_2011, User: hsn [Logout](#)

< Back Forward > Tools Help

Requirements Edit View Favorites Analysis

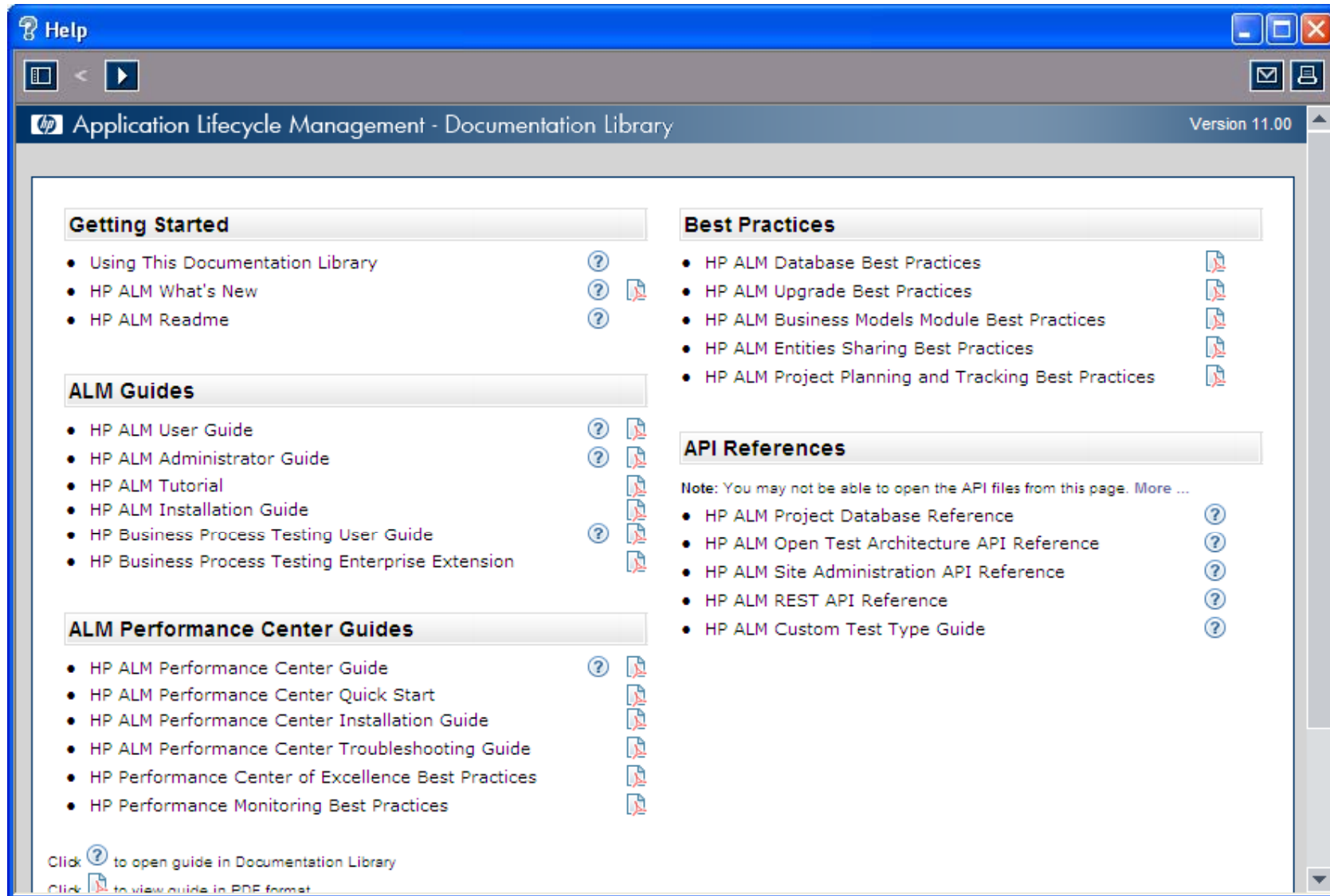
No Filter Defined

Name	Direct Cover Status	Author	Req ID	Target Release	Target Cycle	Planned tests
Requirements	---		0			---
Krav specifikation	---	hsn	1			---
Beregninger	---	hsn	4			---
Smart renteberegning	---	hsn	5	Release 1.0		20
Varierende rente	No Run	hsn	7	Release 1.0		---
Fast rente	Not Covered	hsn	8	Release 1.0		---
Toplækker analyse af udgift...	---	hsn	6			10
Design specifikation	---	hsn	2			---
Funktional specifikation	---	hsn	3			---

Description Comments Rich Text Attachments History

B I U A ab [List Icons] [Undo] [Redo] [Grid] [AB]

Database diagram



Help

Application Lifecycle Management - Documentation Library Version 11.00

Getting Started

- Using This Documentation Library
- HP ALM What's New
- HP ALM Readme

ALM Guides

- HP ALM User Guide
- HP ALM Administrator Guide
- HP ALM Tutorial
- HP ALM Installation Guide
- HP Business Process Testing User Guide
- HP Business Process Testing Enterprise Extension

ALM Performance Center Guides

- HP ALM Performance Center Guide
- HP ALM Performance Center Quick Start
- HP ALM Performance Center Installation Guide
- HP ALM Performance Center Troubleshooting Guide
- HP Performance Center of Excellence Best Practices
- HP Performance Monitoring Best Practices

Best Practices

- HP ALM Database Best Practices
- HP ALM Upgrade Best Practices
- HP ALM Business Models Module Best Practices
- HP ALM Entities Sharing Best Practices
- HP ALM Project Planning and Tracking Best Practices

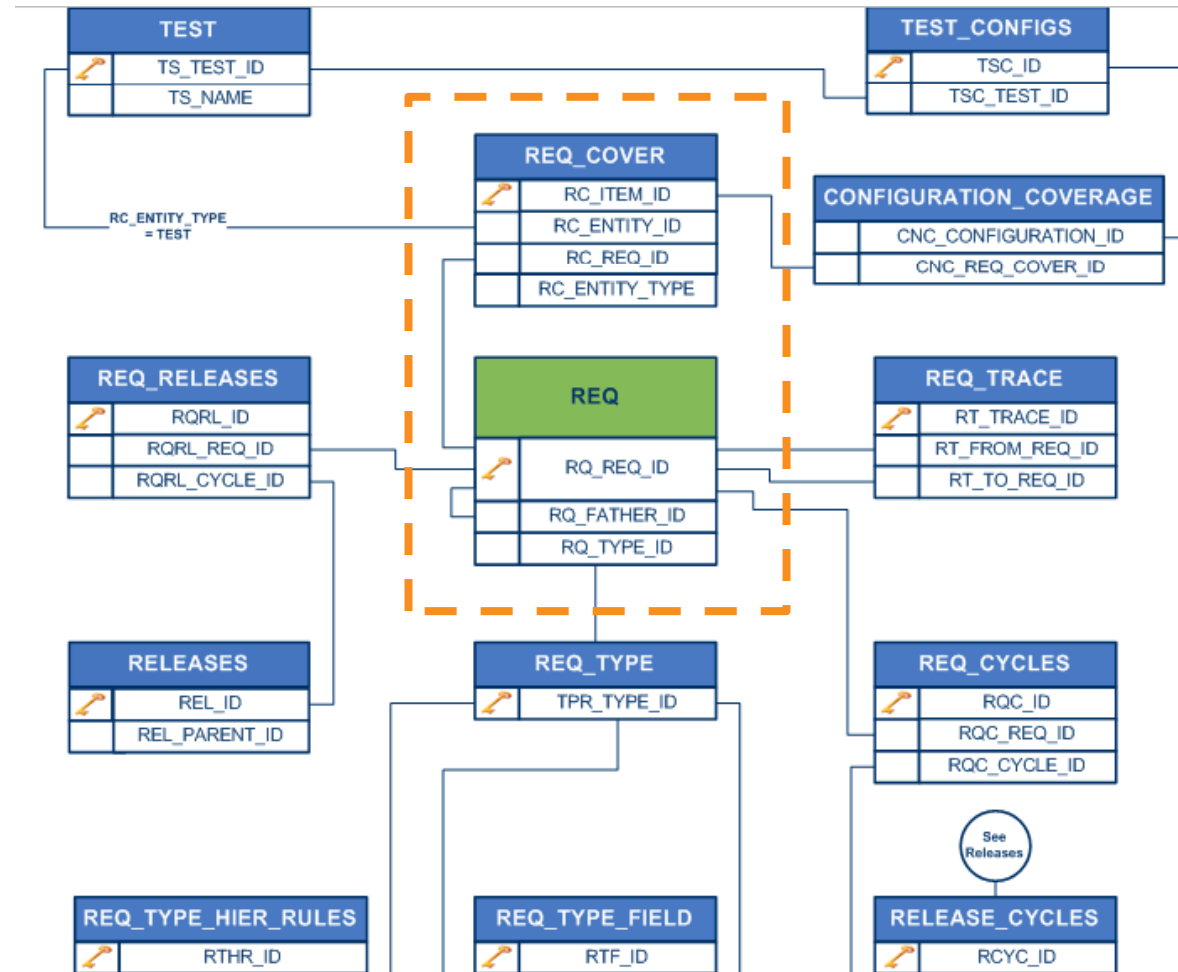
API References

Note: You may not be able to open the API files from this page. More ...

- HP ALM Project Database Reference
- HP ALM Open Test Architecture API Reference
- HP ALM Site Administration API Reference
- HP ALM REST API Reference
- HP ALM Custom Test Type Guide

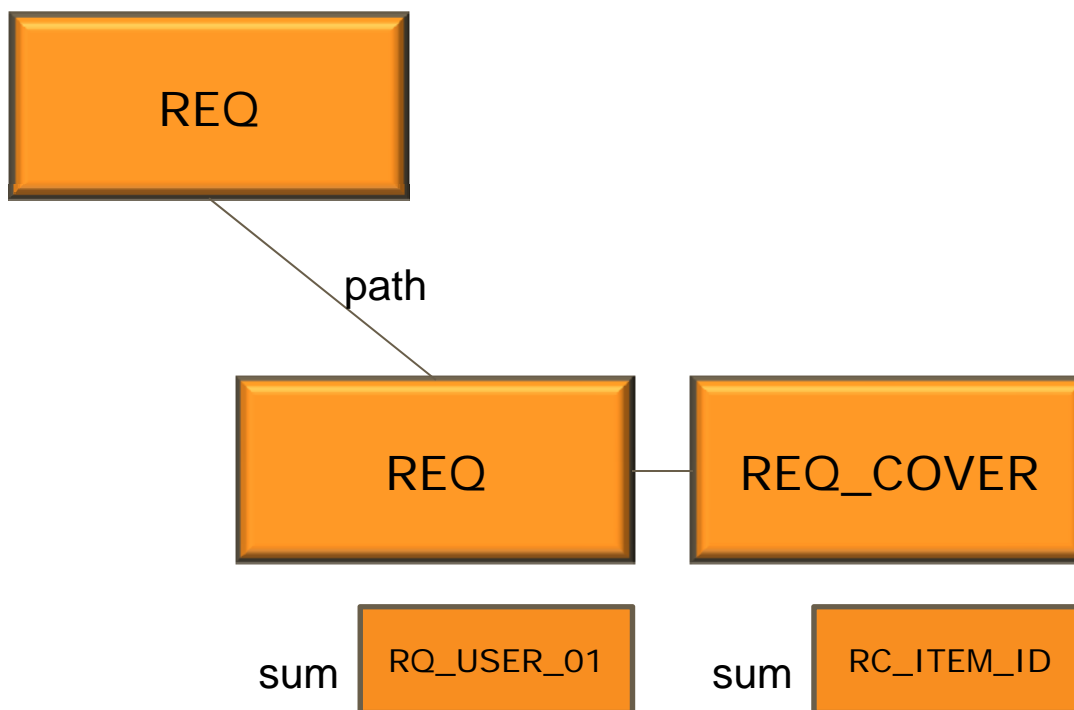
Click ? to open guide in Documentation Library
Click PDF to view guide in PDF format

Database diagram

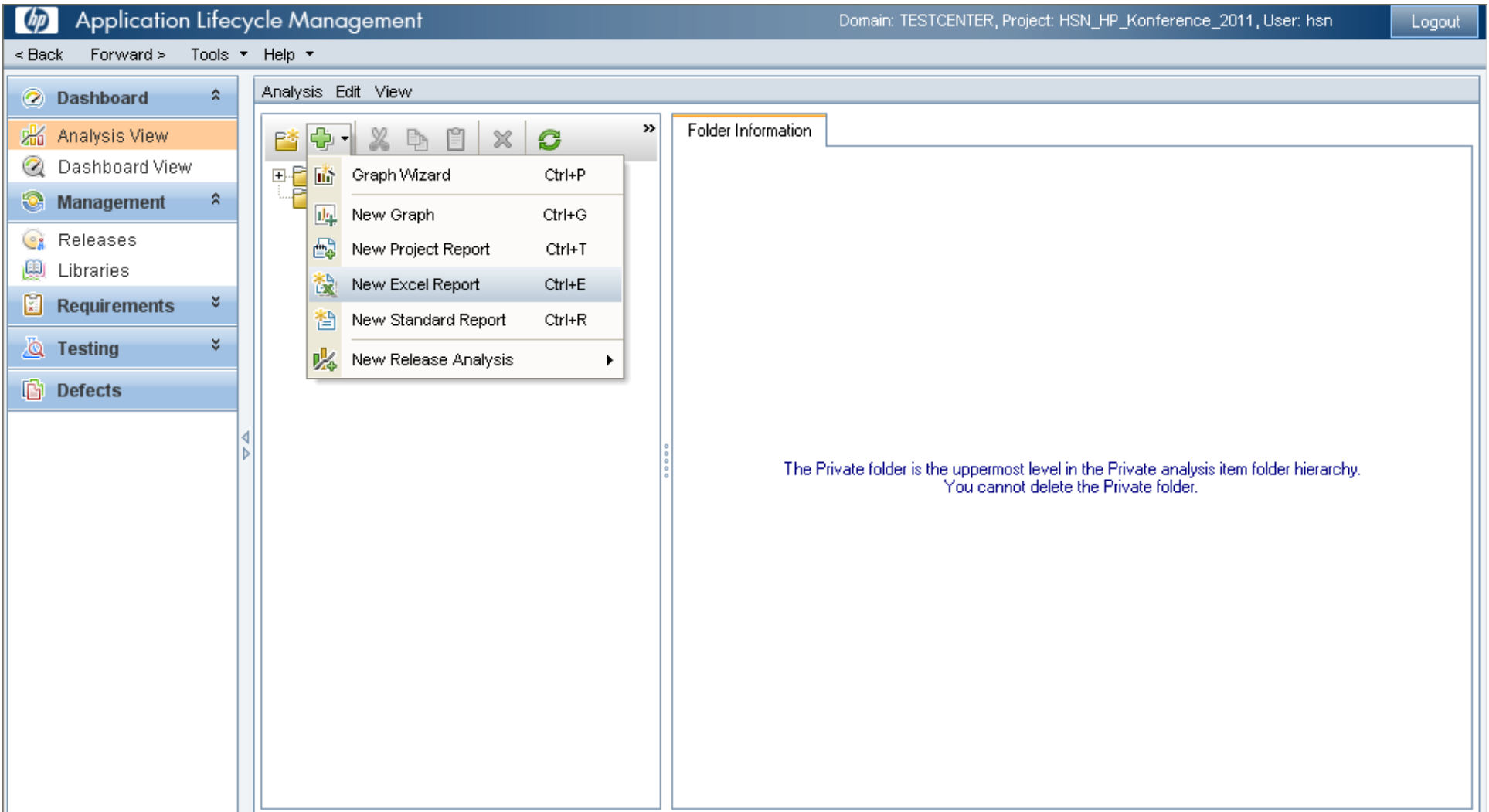




Excel rapport



Excel rapport



The screenshot displays the HP Application Lifecycle Management (ALM) web interface. The top navigation bar includes the HP logo, the text 'Application Lifecycle Management', and user information: 'Domain: TESTCENTER, Project: HSN_HP_Konference_2011, User: hsn'. A 'Logout' button is located on the right. Below the navigation bar is a menu with options: '< Back', 'Forward >', 'Tools', and 'Help'. On the left side, there is a vertical navigation pane with the following sections: 'Dashboard', 'Analysis View' (highlighted), 'Dashboard View', 'Management', 'Releases', 'Libraries', 'Requirements', 'Testing', and 'Defects'. The main content area is titled 'Analysis Edit View' and contains a toolbar with icons for folder operations. A context menu is open over the toolbar, listing the following actions and their keyboard shortcuts:

- Graph Wizard (Ctrl+P)
- New Graph (Ctrl+G)
- New Project Report (Ctrl+T)
- New Excel Report (Ctrl+E)
- New Standard Report (Ctrl+R)
- New Release Analysis

The 'Folder Information' tab is active, displaying the following text:

The Private folder is the uppermost level in the Private analysis item folder hierarchy.
You cannot delete the Private folder.



Excel rapport

Application Lifecycle Management Domain: TESTCENTER, Project: HSN_HP_Konference_2011, User: hsn [Logout](#)

< Back Forward > Tools Help

- Dashboard
- Analysis View**
- Dashboard View
- Management
 - Releases
 - Libraries
 - Requirements
 - Testing
 - Defects

Analysis Edit View

- Private
 - Antal planlagte tes
 - Antal planlagte tes
 - Antal planlagte tes
- Public

Details Configuration View

Query Post-processing Generation Settings

Generate Query Builder Find:

Query1

```
select a.RQ_REQ_ID, a.RQ_REQ_NAME,
       (select sum(cast(b.RQ_USER_01 as integer)) from REQ b
        where b.RQ_REQ_PATH like a.RQ_REQ_PATH+'%'),
       (select count(d.RC_ITEM_ID)
        from REQ c LEFT JOIN REQ_COVER d on c.RQ_REQ_ID = d.RC_REQ_ID
        where c.RQ_REQ_PATH like a.RQ_REQ_PATH+'%')
from REQ a
where a.RQ_REQ_PATH like (select e.RQ_REQ_PATH
                          from REQ e where e.RQ_REQ_ID = @ParentReqId@ )+'%'
```

Name	Default Value	Hide On Run	Description	Type
ParentReqId	0	<input type="checkbox"/>		Private



Excel rapport

```
select DATALENGTH(a.RQ_REQ_PATH)/3, a.RQ_REQ_ID, a.RQ_REQ_NAME,
       (select sum(cast(b.RQ_USER_01 as integer)) from REQ b
        where b.RQ_REQ_PATH like a.RQ_REQ_PATH+'%'),
       (select count(d.RC_ITEM_ID)
        from REQ c LEFT JOIN REQ_COVER d on c.RQ_REQ_ID = d.RC_REQ_ID
        where c.RQ_REQ_PATH like a.RQ_REQ_PATH+'%')
from REQ a
where a.RQ_REQ_PATH like (select e.RQ_REQ_PATH
                          from REQ e where e.RQ_REQ_ID = @ParentReqId@
                          )+'%'
order by a.RQ_REQ_PATH
```

Niveau	Id	Navn	Planlagte tests	Faktiske tests



Excel rapport

hp Application Lifecycle Management Domain: TESTCENTER, Project: HSN_HP_Konference_2011, User: hsn Logout

< Back Forward > Tools Help ▾

Analysis Edit View

- Dashboard
- Analysis View
- Dashboard View
- Management
 - Releases
 - Libraries
- Requirements
 - Requirements
 - Business Models
- Testing
- Defects

Private

- Antal planlagte tests i
- Antal planlagte tests t
- Antal planlagte testca

Public

Details Configuration View

Query Post-processing Generation Settings

Generate Find: Run post-processing

```
Sub QC_PostProcessing()  
Dim MainWorksheet As Worksheet  
' Make sure your worksheet name matches!  
Set MainWorksheet = ActiveWorkbook.Worksheets("Query1")  
Dim DataRange As Range  
Set DataRange = MainWorksheet.UsedRange  
' Now that you have the data in DataRange you can process it.  
  
' Set columnnames into the first row  
DataRange.Cells(1, 1).Value = "Requirement detail level"  
DataRange.Cells(1, 2).Value = "Requirement id"  
DataRange.Cells(1, 3).Value = "Requirement name"  
DataRange.Cells(1, 4).Value = "Planned tests"  
DataRange.Cells(1, 5).Value = "Authored tests"  
DataRange.Cells(1, 6).Value = "Completion"  
  
' Set a width for each column  
DataRange.Columns(1).ColumnWidth = 25  
DataRange.Columns(2).ColumnWidth = 20  
DataRange.Columns(3).ColumnWidth = 30  
DataRange.Columns(4).ColumnWidth = 15
```



Excel rapport

```
Sub QC_PostProcessing()  
    Dim MainWorksheet As Worksheet  
    ' Make sure your worksheet name matches!  
    Set MainWorksheet = ActiveWorkbook.Worksheets("Query1")  
    Dim DataRange As Range  
    Set DataRange = MainWorksheet.UsedRange  
    ' Now that you have the data in DataRange you can process it.  
  
    ' Set columnnames into the first row  
    DataRange.Cells(1, 1).Value = "Requirement detail level"  
    DataRange.Cells(1, 2).Value = "Requirement id"  
    DataRange.Cells(1, 3).Value = "Requirement name"  
    DataRange.Cells(1, 4).Value = "Planned tests"  
    DataRange.Cells(1, 5).Value = "Authored tests"  
    DataRange.Cells(1, 6).Value = "Completion"  
  
    ' Set a width for each column  
    DataRange.Columns(1).ColumnWidth = 25  
    DataRange.Columns(2).ColumnWidth = 20  
    DataRange.Columns(3).ColumnWidth = 30  
    DataRange.Columns(4).ColumnWidth = 15  
    DataRange.Columns(5).ColumnWidth = 15  
    DataRange.Columns(6).ColumnWidth = 15
```



Excel rapport

```
' Insert a conditional formatting of the rightmost column
DataRange.Columns(6).NumberFormat = "0.0%"
DataRange.Columns(6).FormatConditions.AddDatabar
DataRange.Columns(6).FormatConditions(1).ShowValue = True
DataRange.Columns(6).FormatConditions(1).SetFirstPriority
DataRange.Columns(6).FormatConditions(1).MinPoint.Modify
newtype:=xlConditionValueNumber, newvalue:=0
DataRange.Columns(6).FormatConditions(1).MaxPoint.Modify
newtype:=xlConditionValueNumber, newvalue:=1
DataRange.Columns(6).FormatConditions(1).BarColor.Color = 13012579
DataRange.Columns(6).FormatConditions(1).BarColor.TintAndShade = 0

' Insert a formula to calculate the current progress in percent
For r = 2 To DataRange.Rows.Count
    DataRange.Cells(r, 6).Formula = "=if( R[0]C[-2]>0 , R[0]C[-1]/R[0]C[-2] ,
"""" )"
Next

' Insert an autofilter
Set DataRange = MainWorksheet.UsedRange
DataRange.Rows(1).AutoFilter
DataRange.Rows(1).Font.Bold = True
```

End Sub



Excel rapport

hp Application Lifecycle Management Domain: TESTCENTER, Project: HSN_HP_Konference_2011, User: hsn [Logout](#)

< Back Forward > Tools Help ▾

- Dashboard
- Analysis View**
- Dashboard View
- Management
- Releases
- Libraries
- Requirements
- Requirements
- Business Models
- Testing
- Defects

Analysis Edit View

- Private
 - Antal planlagte tests i
 - Antal planlagte tests t
 - Antal planlagte testca
- Public

Details Configuration View

Query Post-processing Generation Settings

Generate

Launch report in Excel

Status:

Save report as:

Excel rapport

Report Parameters

Sheet	Name	Value	Description
Query1	ParentReqId	0	

OK Cancel



Excel rapport

The screenshot displays the HP Application Lifecycle Management (ALM) interface. The top navigation bar includes the HP logo, the text 'Application Lifecycle Management', and user information: 'Domain: TESTCENTER, Project: HSN_HP_Conference_2011, User: hsn'. A 'Logout' button is located in the top right corner. Below the navigation bar, there are tabs for '< Back', 'Forward >', 'Tools', and 'Help'. The left sidebar contains a menu with categories: Dashboard, Analysis View (selected), Dashboard View, Management, Releases, Libraries, Requirements, Business Models, Testing, and Defects. The main workspace is divided into two panes. The left pane shows a file tree with folders 'Private' and 'Public'. Under 'Private', there are three files: 'Antal planlagte tests i...', 'Antal planlagte tests t...', and 'Antal planlagte testca...'. The right pane shows a 'Detail' view with a 'Progress' dialog box overlaid. The dialog box has a blue title bar, a progress bar, and a 'Stop' button. Below the dialog, there is a checkbox labeled 'Launch report in Excel' which is checked. The 'Status' is shown as 'Ready'. The 'Save report as:' field contains the text 'Antal planlagte tests i forhold til faktiske.xls'.

Excel rapport

Antal planlagte tests i forhold til faktiske.xlsm - Microsoft Excel

Startside Indsæt Sidelayout Formler Data Gennemse Vis Udvikler Tilføjelsesprogrammer

Calibri 11 A⁺ A⁻ Ombryd tekst

F B U Flet og centrér Tekst

Udklipsholder Skrifttype Justering Tal Betinget formatering Formater som tabel Celletypografi

A1 Requirement detail level

	A	B	C	D	E	F
1	Requirement detail level	Requirement id	Requirement name	Planned tests	Authored tests	Completion
2	1	0	Requirements	30	1	3,3%
3	2	1	Krav specifikation	30	1	3,3%
4	3	4	Beregninger	30	1	3,3%
5	4	5	Smart renteberegning	20	1	5,0%
6	5	7	Variierende rente	0	1	
7	5	8	Fast rente	0	0	
8	4	6	Toplækker analyse af udgifter	10	0	0,0%
9	2	2	Design specifikation	0	0	
10	2	3	Funktionel specifikation	0	0	
11						
12						
13						
14						
15						
16						
17						