

QTP Tips og Tricks

Jesper.Mortensen@Sketenty.dk

HP UG Nov 2009

Indhold

- Excel regneark som attachments i QC
- Registrering af funktioner
 - Betinget indtastning af data
 - Understøttelse af GUI objekter
- ?

Regneark i QC

- Testcase med mange forskellige datasæt
 - (Mange rækker i regnearket)
- Behov for at sætte et datasæt på i TestLab
 - (Mange forskellige regneark)
- Behov for at gemme resultater
 - Senere gentest
 - Input til andre test
 - Sammenligning af forskellige version af app.

QuickTest Professional - [[QualityCenter] SubjectDemo\Buy Flights]

File Edit View Insert Automation Resources Debug Tools Window Help

New Open Save Print Copy Paste Undo Redo

Record Run Stop

Start Page Buy Flights

Test Flow Back Show

| Item | Operat | Documentation |
|---------|--------|-------------------------|
| Action1 | | All the Action1 action. |

Udfør test

Keyword View Expert View

Data Table

| A1 | Name | B | C | D | E | F | G | H | I | J | K |
|----|--------------|---|---|---|---|---|---|---|---|---|---|
| 1 | Kurt Olsen | | | | | | | | | | |
| 2 | Ulla Olsen | | | | | | | | | | |
| 3 | Peter Jensen | | | | | | | | | | |
| 4 | | | | | | | | | | | |
| 5 | | | | | | | | | | | |
| 6 | | | | | | | | | | | |
| 7 | | | | | | | | | | | |

Global Action1

Ready

QuickTest Professional - [[QualityCenter] Subject\Demo\Buy Flights 2]

File Edit View Insert Automation Resources Debug Tools Window Help

New Open Save Print Copy Paste Undo Redo

Record Run Stop

Start Page Buy

Test Flow

Item Operation Documentation

| | | |
|---------|--|--------------------------|
| Init | | Call the Init action. |
| Payload | | Call the Payload action. |
| End | | Call the End action. |

Udfør test

Afslut pænt

Hent Regneark

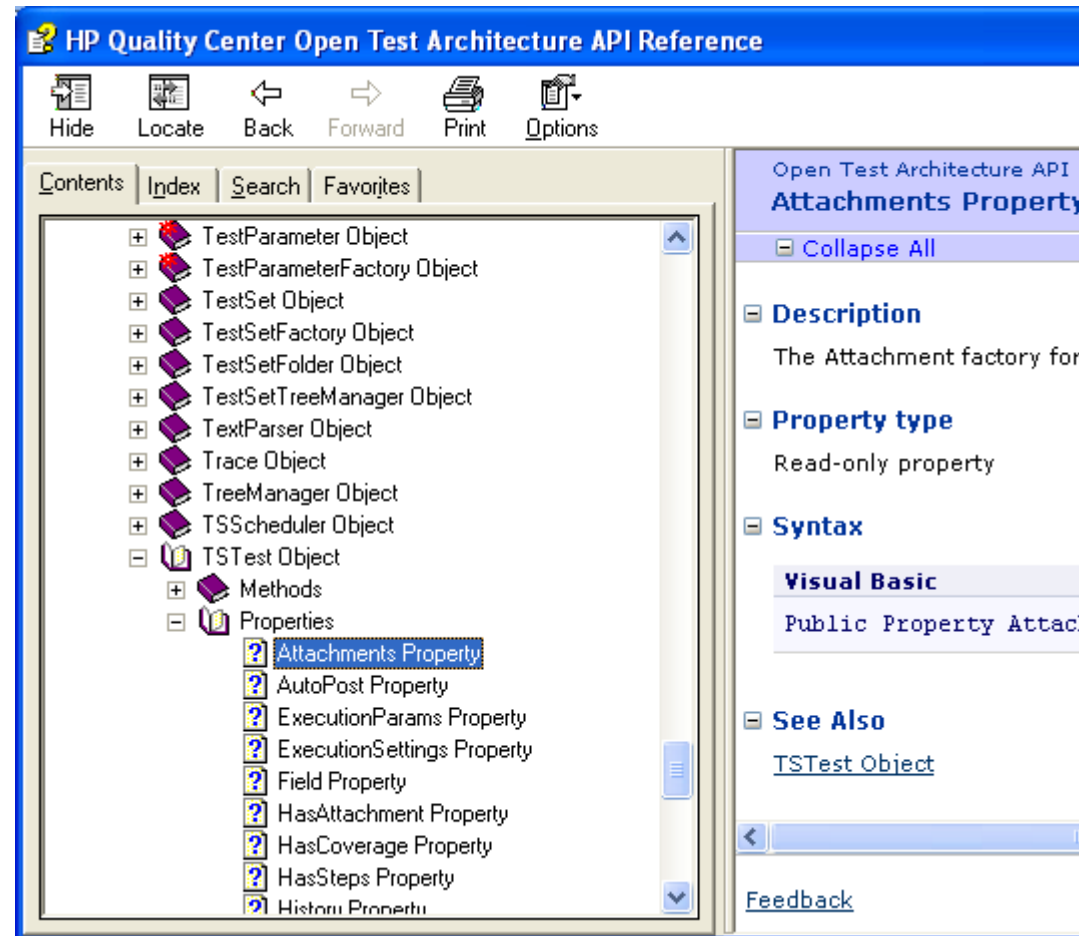
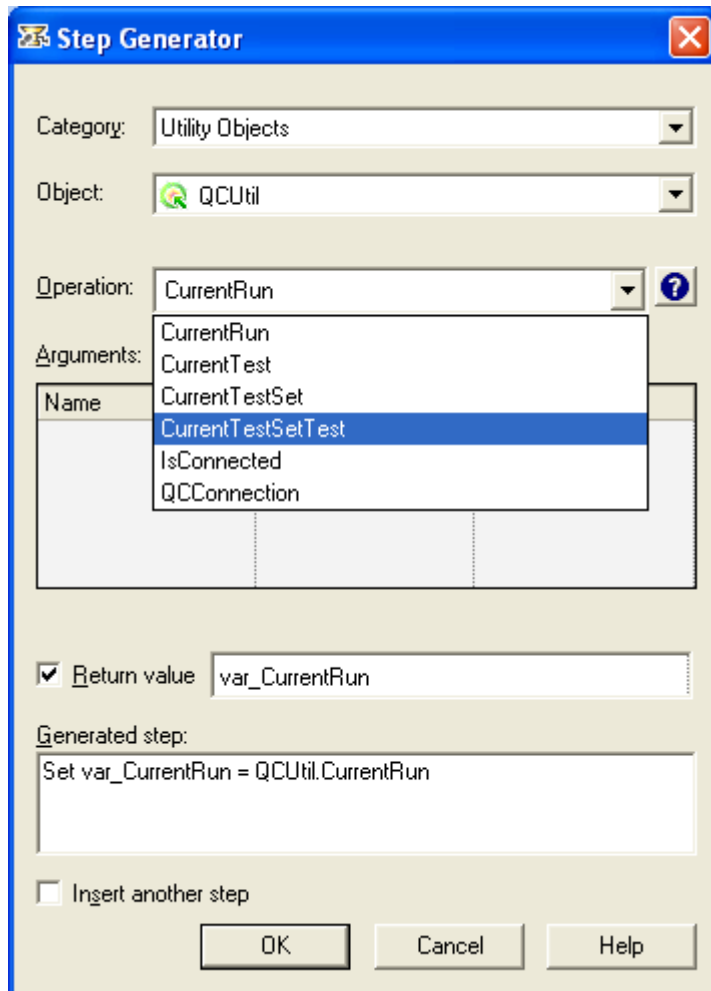
Keyword View Expert View

Data Table

| | Name | B | C | D | E | F | G | H | I | J | K |
|---|--------------|---|---|---|---|---|---|---|---|---|---|
| 1 | Kurt Olsen | | | | | | | | | | |
| 2 | Ulla Olsen | | | | | | | | | | |
| 3 | Peter Jensen | | | | | | | | | | |
| 4 | | | | | | | | | | | |
| 5 | | | | | | | | | | | |
| 6 | | | | | | | | | | | |
| 7 | | | | | | | | | | | |

Global Payload Init End

Done Ready



QuickTest Professional - [[QualityCenter] Subject\Demo\Buy Flights 2*]

File Edit View Insert Automation Resources Debug Tools Window Help

New Open Save Print Copy Paste Undo Redo Find

Record Run Stop

Start Page Buy Flights 2*

Init

```

7:
8:
9: Set attachmentFactory = QCUtil.CurrentTest.Attachments
10: Set atts = attachmentFactory.NewList("")
11: For Each att In atts
12:   If att.Name(1) = "Buy Flights.xls" Then
13:     att.Load True, ""
14:   foo = bar
15:   End If
16: Next
17:
18:

```

Keyword View Expert View

Debug Viewer

Context: VBScript global code

| Name | Value | Type |
|----------------|---|--------|
| typename(atts) | "IFactoryList" | String |
| att.FileName | "C:\DOCUME~1\jbm\LOCALS~1\Temp\TD_80\08aa96de\Attach\TEST\2\TEST_2_Buy Flights.xls" | String |

Watch Variables Command

Global - Row 1 Init - Row 1

Ready

LoadExcelFromOTA

- Sub LoadExcelFromOTA(ota, xls)
- Set attachmentFactory = ota.Attachments
- Set atts = attachmentFactory.NewList("")
- For Each att In atts
- If att.Name(1) = xls Then
- att.Load True, ""
- DataTable.Import att.FileName
- End If
- Next
- End Sub

- ' Call Sub
- LoadExcelFromOTA QCUtil.CurrentTest, "Buy Flights.xls"

SaveExcelToOTA

- Sub SaveExcelToOTA(ota, xls)
- Set attachmentFactory = ota.Attachments
- Set atts = attachmentFactory.NewList("")
- For Each att In atts
- If att.Name(1) = xls Then
- att.Load True, ""
- DataTable.Export att.FileName
- att.Save True
- found = True
- End If
- Next
- If Not found Then
- DataTable.Export "C:\Temp\" & xls
- Set att = attachmentFactory.AddItem(Null)
- att.FileName = "C:\Temp\" & xls
- att.Type = 1
- att.Post
- att.Save True
- End If
- End Sub
- ' Call Sub
- SaveExcelToOTA QCUtil.CurrentRun, "Buy Flights Result.xls"

Registrering af funktioner

- Adgang til funktion i
 - Keyword view
 - Intellisense
- Organisering af funktioner
 - Hvilke GUI objekter vedrører de

Action Properties

General Parameters Associated Repositories Used By

Input parameters

| Name | Type | Default Value | Description |
|-------------|--------|---------------|-------------|
| Name | String | Kurt Olsen | |
| From | String | Denver | |
| To | String | Paris | |
| NoOfTickets | String | | |

Accepter default ?

Output parameters

| Name | Type |
|------|------|
|------|------|

| Component | Property | Value |
|--------------------|--------------|-------------------------------|
| IF | Login | Exist 1 |
| Flight Reservation | Activate | |
| Date of Flight: | Set | "12/12/12" |
| Date of Flight: | Type | micTab |
| Fly From: | Select | Parameter("From") |
| Fly To: | Select | Parameter("To") |
| FLIGHT | Click | |
| Flights Table | | |
| OK | Click | |
| Name: | Set | Parameter("Name") |
| Flight Reservation | Activate | |
| Tickets: | Set | Parameter("NoOfTickets") |
| Business | Set | |
| Insert Order | Click | |
| AfxWnd40 | WaitProperty | "text","Insert Done...",10000 |
| Button | Click | |

”SetIfValueInParam”

- Hvis parameteren er udfyldt anvendes den
- Hvis den ikke er udfyldt tømmes feltet
- Hvis der står ”adv” betyder det ”Accepter Default værdi”

Function Definition Generator

Function definition

Name:

Type:

Scope:

Arguments:

| Name | Pass Mode |
|-------------|--------------|
| test_object | By reference |
| value | By reference |

Register to a test object

Test object: Operation:

Register as default operation

Additional information

Description:

Documentation:

Preview

```

'@Description Denne funktion indsætter den angivne værdi
'@Documentation <value> Lader default værdien stå hvis "adv" angives
Public Function SetIfValueInParam(ByRef test_object, ByRef value)
    ' TODO: add function body here
End Function
RegisterUserFunc "WinEdit", "SetIfValueInParam", "SetIfValueInParam"
  
```

Insert another function definition

OK Cancel Help

| | | |
|--------------------|-------------------|-------|
| Flight Reservation | Activate | |
| Tickets: | SetIfValueInParam | 3 |
| Business | Set | value |
| Insert Order | Click | |

| | | |
|--------------------|--------------------|---------|
| Name: | Set | Param |
| Flight Reservation | Activate | |
| Tickets: | SetIfValueInPar... | |
| Business | GetVisibleText | |
| Insert Order | MouseMove | |
| AfxWnd40 | RefreshObject | "text". |
| Button | Set | |
| | SetCaretPos | |
| | SetIfValueInParam | |
| | SetSecure | |

Udvikling

- `@Description` Denne funktion indsaetter den angivne vaerdi
- `'@Documentation` <value> en værdi, "adv" hvis default værdien skal bruges
- `Public Function SetIfValueInParam(ByRef test_object, ByRef value)`
- `' TODO: add function body here`

- `If value <> "adv" Then`
- `Window("Flight Reservation").WinEdit("Tickets:").Set "78"`
- `End If`

- `End Function`
- `RegisterUserFunc "WinEdit", "SetIfValueInParam", "SetIfValueInParam"`

- '@Description Denne funktion indsaetter den angivne vaerdi
- '@Documentation <value> en værdi, "adv" hvis default værdien skal bruges
- Public Function SetIfValueInParam(ByRef test_object, ByRef value)
- ' TODO: add function body here
- If value <> "adv" Then
- test_object.Set value
- Else
- Reporter.ReportEvent micDone, _
- "Accepterer default værdi", test_object.GetVisibleText
- End If
- End Function
- RegisterUserFunc "WinEdit", "SetIfValueInParam", "SetIfValueInParam"

Action Properties

General Parameters Associated Repositories Used By

Input parameters + x

| Name | Type | Default Value | Description |
|-------------|--------|---------------|-------------|
| Name | String | Kurt Olsen | |
| From | String | Denver | |
| To | String | Paris | |
| NoOfTickets | String | adv | |
| | | | |

Output parameters

| Name |
|------|
| |

Buy Flights 4 [TempResults] - Test Results

File View Tools Help

Test Buy Flights 4 Summary

- Run-Time Data Table
- Buy Flights 4 Iteration 1 (Row 1)
 - Action1 Summary
 - Login
 - Flight Reservation
 - Flight Reservation.Activate
 - Date of Flight: .SetText
 - Date of Flight: .Type
 - Fly From: .Select
 - Fly To: .Select
 - FLIGHT.Click
 - Flights Table
 - Name: .SetText
 - Flight Reservation.Activate
 - Accepterer default værdi**
 - Business.Set
 - Insert Order.Click
 - AfxWnd40.WaitProperty
 - Button.Click

Step Name: Accepterer default værdi

Step Done

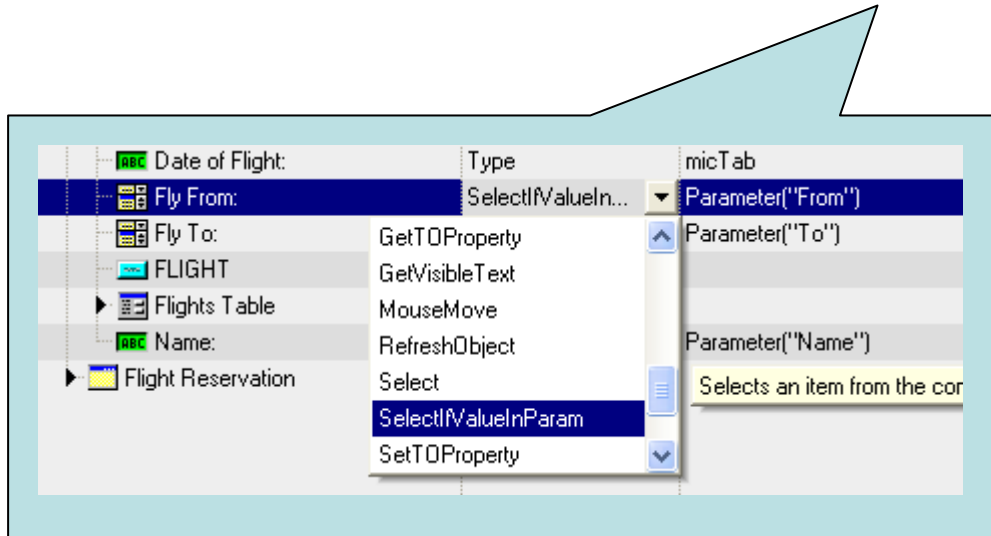
| Object | Details | Result | Time |
|--------------------------|---------|--------|-----------------------|
| Accepterer default værdi | 1 | Done | 10-11-2009 - 19:50:02 |

Result Details | Screen Recorder | System Monitor

For Help, press F1 Ready

Registrer til flere objekter

- RegisterUserFunc "WinEdit", "SetIfValueInParam", "SetIfValueInParam"
- RegisterUserFunc "WinComboBox", "SelectIfValueInParam", "SetIfValueInParam"



?